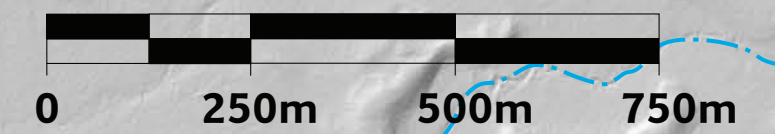


West Bragg Creek Trails



Scale 1:9,000



Legend

- YOU ARE HERE
- Trail
- Trail - cross country ski
- Trail - snowshoe
- Trail - non maintained
- Road
- - - Stream
- 0.3 • Distance in kilometres
- P Parking
- Gate
- Trans-Canada Trail

Cross-country ski trails are maintained for skiing December 1 to March 31.

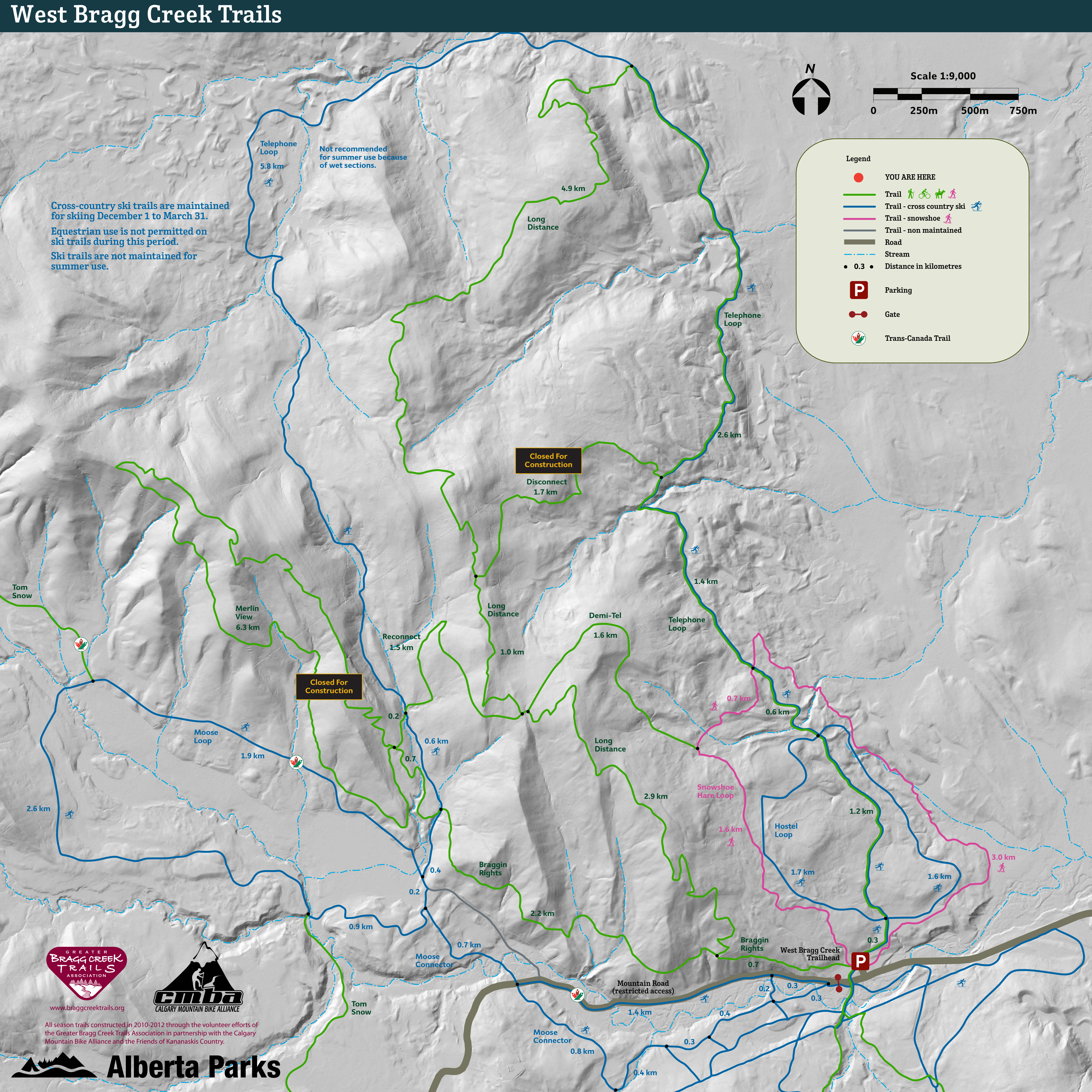
Equestrian use is not permitted on ski trails during this period.

Ski trails are not maintained for summer use.

Not recommended for summer use because of wet sections.

Closed For Construction

Closed For Construction



www.braggcreektrails.org



All season trails constructed in 2010-2012 through the volunteer efforts of the Greater Bragg Creek Trails Association in partnership with the Calgary Mountain Bike Alliance and the Friends of Kananaskis Country.

